

# Mystery Skulls

## Hominid Post-lab

### Part 1: What Other Hominid Species Are There?

- Go to the Smithsonian hominid page (<http://humanorigins.si.edu/evidence/human-fossils/species>).
  - Sort the species by age.
- 1) How many different *genera* (plural of genus) of hominid are represented in this group? (How many different first names do they have?) List them:
  - 2) How many different species of hominid have been discovered total? (Count them up!)
  - 3) Scroll down to the diagram at the bottom of the page. How many different groups (colors) does this diagram divide these hominid species into?
  - 4) Based on this diagram, which hominid species was around for the longest?
  - 5) What was the first species of hominid, and how long ago did it live?

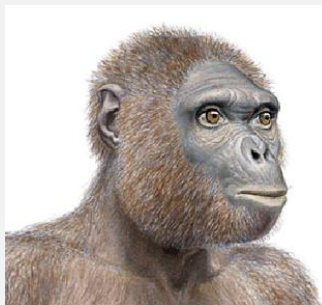
### Part 2: Recent Fossil Finds

- Click on each of the hominid species listed below and record some facts about each.
- Read some of the “unanswered questions” for each species.



**Sahelanthropus tchadensis**

- Location:
- Age:
- Year discovered:
- Unique characteristics:



**Ardipithecus ramidus**

- Location:
- Age:
- Year discovered:
- Unique characteristics:



**Australopithecus sediba**

- Location:
- Age:
- Year discovered:
- Unique characteristics:



**Homo naledi**

- Location:
- Age:
- Year discovered:
- Unique characteristics:



**Homo floresiensis**

- Location:
- Age:
- Year discovered:
- Unique characteristics:

### Part 3: Mystery Skulls

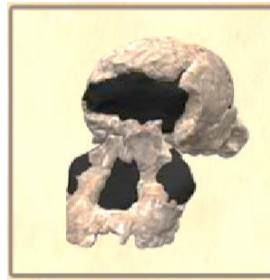
- *On the left-hand menu, click on "Mystery Skull Interactive".*
- *Use the hints to identify the correct species for each mystery skull.*
- *Record which specific traits helped most to match the fossil to a known species.*

#### Mystery Skull 1



- What species?
- How can you tell?

#### Mystery Skull 2



- What species?
- How can you tell?

#### Mystery Skull 3



- What species?
- How can you tell?

#### Mystery Skull 4



- What species?
- How can you tell?